

## HD Rapid Dome Cameras from Sony

The SNC-RH124 and SNC-RH164 are network HD rapid dome cameras supporting H.264, MPEG-4, and JPEG compression formats, that deliver excellent picture quality at HD resolution (1280 x 720, 30 fps) in 16:9 aspect ratio.

With a total tilt range of 210° and 360° endless high-speed pan capability, they can cover a wide monitoring area with great efficiency.

Plus, with state-of-the-art image-enhancement technologies in a compact body, they allow users to clearly capture objects that have never been easy to visualize in the past.

These new cameras open up a whole new world of video security applications, such as casino surveillance, town monitoring, and traffic/highway observation to name just a few.



### Network Rapid Dome Cameras SNC-RH124/RH164

Preliminary

#### FEATURES

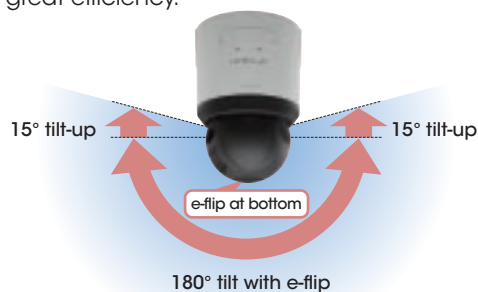
- HD\*1 with 30 fps **HD**
- 10x Zoom
- XDNR (Excellent Dynamic Noise Reduction)
- Visibility Enhancer
- DEPA Advanced 
- 210° Tilt
- Quick Release for Easy Installation
- hPoE (Compliant With IEEE802.3at\*2)
- Triple Codec: H.264/MPEG-4/JPEG
- ONVIF Compliant 

\*1 1280 x 720 (30 fps Progressive)

\*2 Tentative

#### 210° Tilt

The cameras cover a wide monitoring area with great efficiency.



#### Quick Release

The camera can be detached quickly and easily.



Indoor model  
Press Release Button and pull



Outdoor model  
Remove Top Sunshade, Rotate Main Unit and pull (Need to remove Locking screws)

#### Visibility Enhancer

To suppress the extreme whites in a scene, and boost dark areas in a scene at the same time dynamically to produce clear images on the monitor.



Connect Your Vision

## SPECIFICATIONS

	SNC-RH124	SNC-RH164
<b>Camera</b>		
Image device	HD CMOS	
Day/Night *1	Yes	
Wide-D *2	No *3	
Number of effective pixels (H x V)	Approx. 2 Megapixel	
Electronic shutter speed	1/2 to 1/10,000 s	
Auto gain control	Auto/Manual (-3 to +18 dB)	
Exposure control	Auto, Full auto, Shutter-priority, Iris-priority, Manual, EV compensation, Backlight compensation	
White balance mode	Auto, Indoor, Outdoor, One-push WB, Manual	
Lens type	Auto-focus zoom lens	
Zoom ratio	10x	
Horizontal viewing angle	5.4 to 50 degrees	
Focal length	f=5.1 to 51 mm	
F-number	F1.8 (wide), F2.1 (tele)	
Pan angle	360 degrees endless rotation	
Pan speed	400 degrees/s (max.)	
Tilt angle	210 degrees (with e-flip)	
Tilt speed	400 degrees/s (max.)	
<b>Image</b>		
Codec image size (H x V)	1280 x 720, 768 x 576, 640 x 480, 320 x 240 (H.264, MPEG-4, JPEG) (Tentative)	
Video compression format	H.264, MPEG-4, JPEG	
Maximum frame rate	H264/MPEG-4: 30 fps (1280 x 720) JPEG: 10 fps (1280 x 720) (Tentative)	
<b>Audio</b>		
Audio compression	G.711/G.726	
<b>Scene analytics</b>		
Simple activity detection	No	
Intelligent motion detection	Yes (with built in Post Filter)	
Intelligent object detection	No	
<b>Network</b>		
Protocols	TCP/IP, ARP, ICMP, HTTP, FTP (client/server), SMTP, DHCP, DNS, NTP, RTP/RTCP, SNMP (MIB-2) (Tentative)	
Wireless network	Yes (With Optional *4)	
Number of clients	10 (Tentative)	
Authentication	IEEE802.1X	
<b>Analog video output</b>		
Signal system	NTSC/PAL	
S/N ratio	more than 50 dB	
<b>Interface</b>		
Ethernet	10BASE-T/100BASE-TX (RJ-45)	
Serial interface	RS-232C/RS-422 (PELCO D protocol) (Tentative)	
Card slots	CF card x1	
Analog video output	Composite video (1Vp-p)	
Sensor input	x 4	
Alarm output	x 2	
External microphone input	Mini-jack (Monaural), MIC IN/LINE IN: 2.2k ohm, 2.45VDC plug-in power	
Audio line output	Mini-jack (Monaural), Max output level: 1 Vrms	
<b>General</b>		
Mass	Approx. 2.1 kg (4 lb 10 oz)	Approx. 4.5 kg (9 lb 15 oz)
Dimensions (ø x H)	154 x 226 mm (6 1/8 x 9 inches)	238 x 346 mm (9 3/8 x 13 5/8 inches)
Power requirements	hPoE (Tentative), AC24V, DC12V	AC24V
Power consumption	27 W max. (Tentative)	82 W max. (Tentative)
Operating temperature	0 to 50 °C	-40 to 50 °C
Storage temperature	-20 to 60 °C	
<b>System requirements</b>		
Operating system	Windows XP, Windows Vista	
Processor	CPU: Pentium4 3GHz, Intel Core2 Duo 2GHz or higher	
Memory	1GB or more (Tentative)	
Web browser	Microsoft Internet Explorer Ver6.0 or higher	
<b>Supplied accessories</b>		
	Base unit, Mounting bracket, Screws, Cables (Power input, BNC, I/O, Serial), Installation manual, CD-ROM (User's guide, SNC toolbox), Mounting template, Wire rope	Base unit, Top sunshade, Rotate-and-lock coupling, Waterproof plug, Screws, Installation manual, CD-ROM (User's guide, SNC toolbox), Wire rope

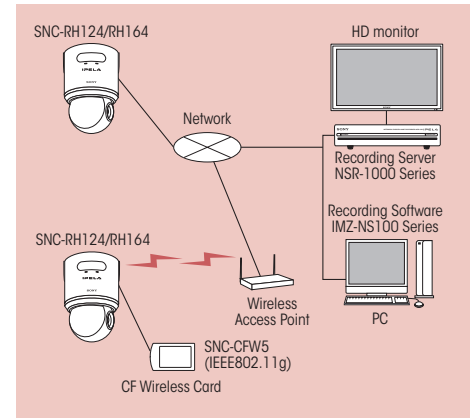
\*1 Removable IR Cut Filter.

\*2 DynaView Technology.

\*3 The camera has a conventional backlight compensation function and Visibility Enhancer, which optimizes image contrast dynamically.

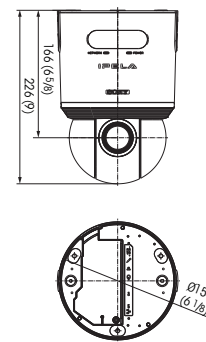
\*4 With optional SNCA-CFW5.

## SYSTEM CONFIGURATIONS

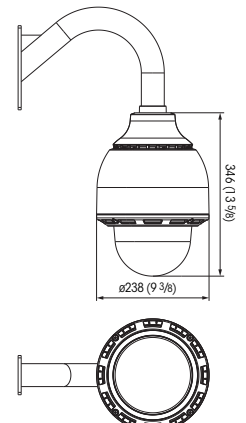


## DIMENSIONS

### SNC-RH124



### SNC-RH164



Unit: mm (inches)

## CONFIGURATION

### SNC-RH164



Install in indicated numerical order

## Distributed by

MK10584V2IW09MAR

© 2009 Sony Corporation. All rights reserved.

Reproduction in whole or in part without written permissions is prohibited. Features and specifications are subject to change without notice.

All non-metric weights and measurements are approximate.

Sony is a registered trademark of Sony Corporation.

IPELA and DEPA are trademarks of Sony Corporation.

All other trademarks are the property of their respective owners.